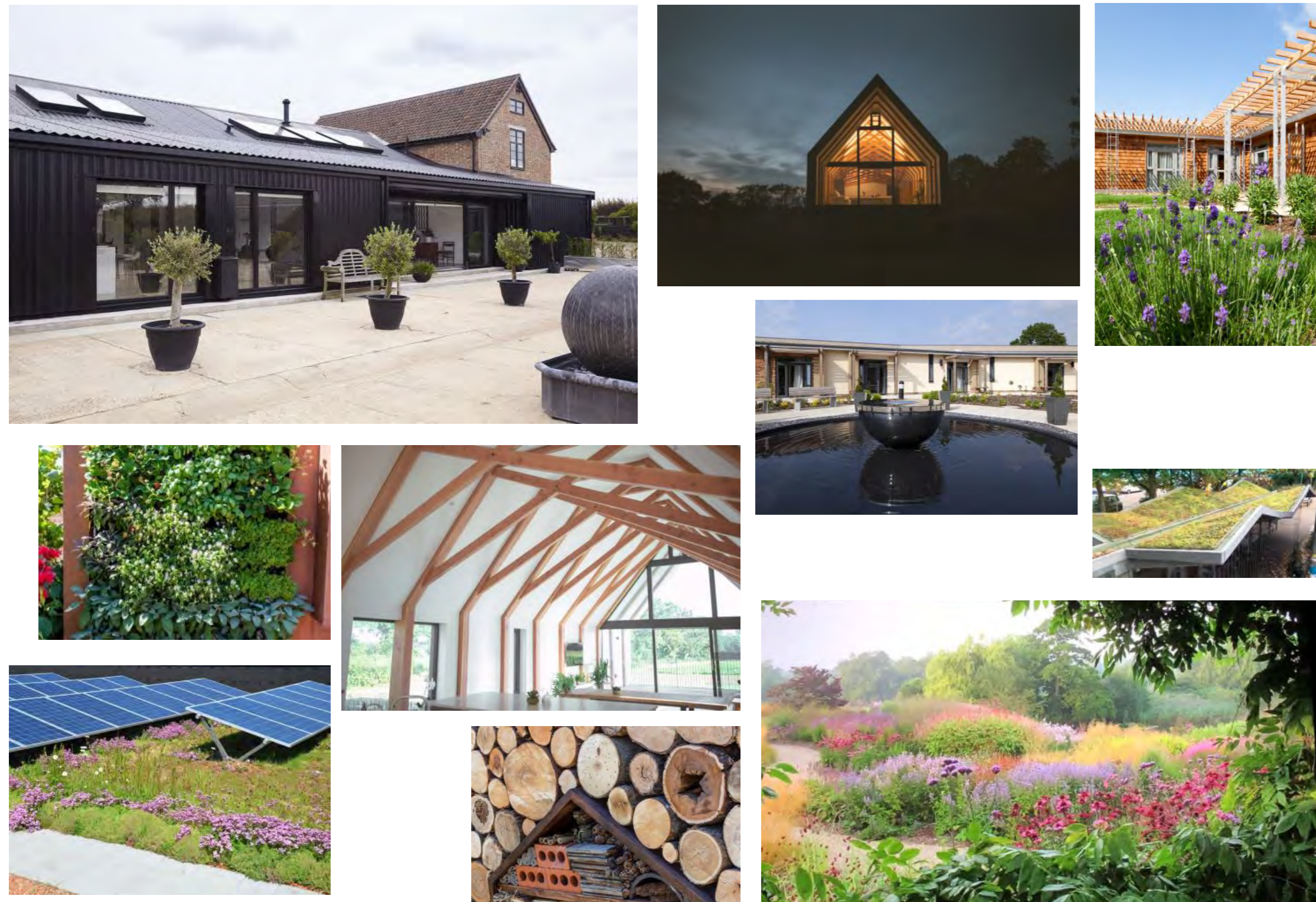


Design of Visitor Centre

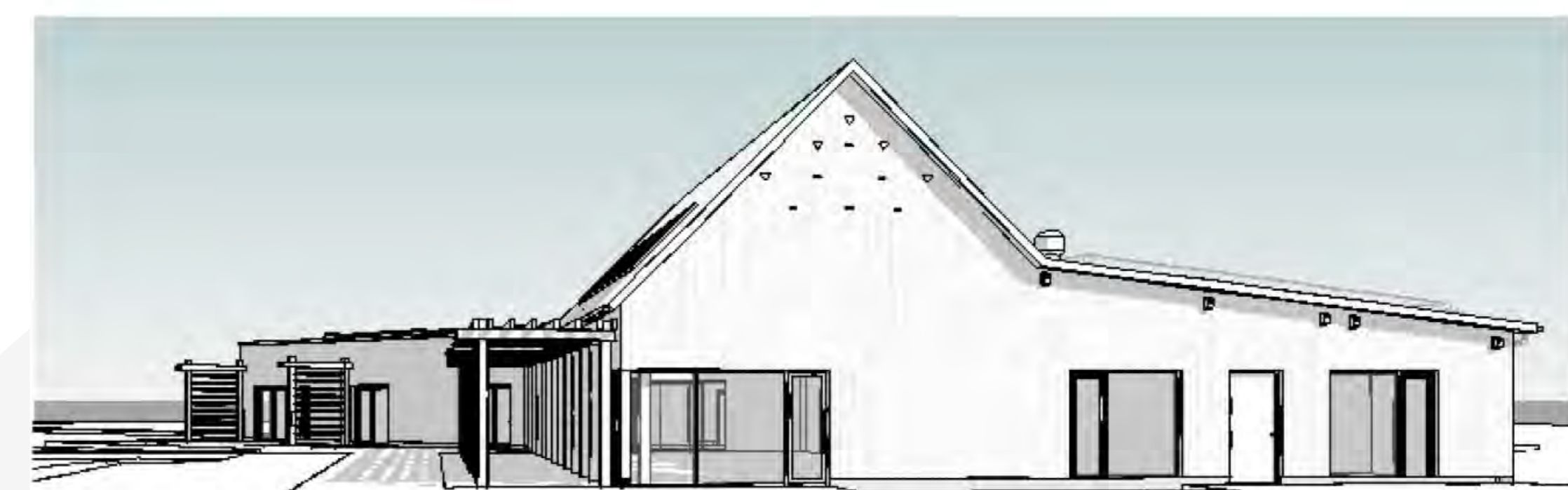
The Visitor Centre has been designed to be accessible and welcoming, with two splayed wings and a connecting foyer. The main building is based on old Buckinghamshire barns, with views of the Chilterns from the café area. Designed with sustainability at its heart, it incorporates solar panels, a pitched roof area for daylight, bird and bat boxes, and green roofs and walls for biodiversity.



1 Entrance View



2 Lake View



3 Garden View