

Kingsbrook Meadows design: What is there now and what will be created?

At the moment, Kingsbrook Meadows is mainly grass fields and hedges, with a little brook on its eastern boundary.

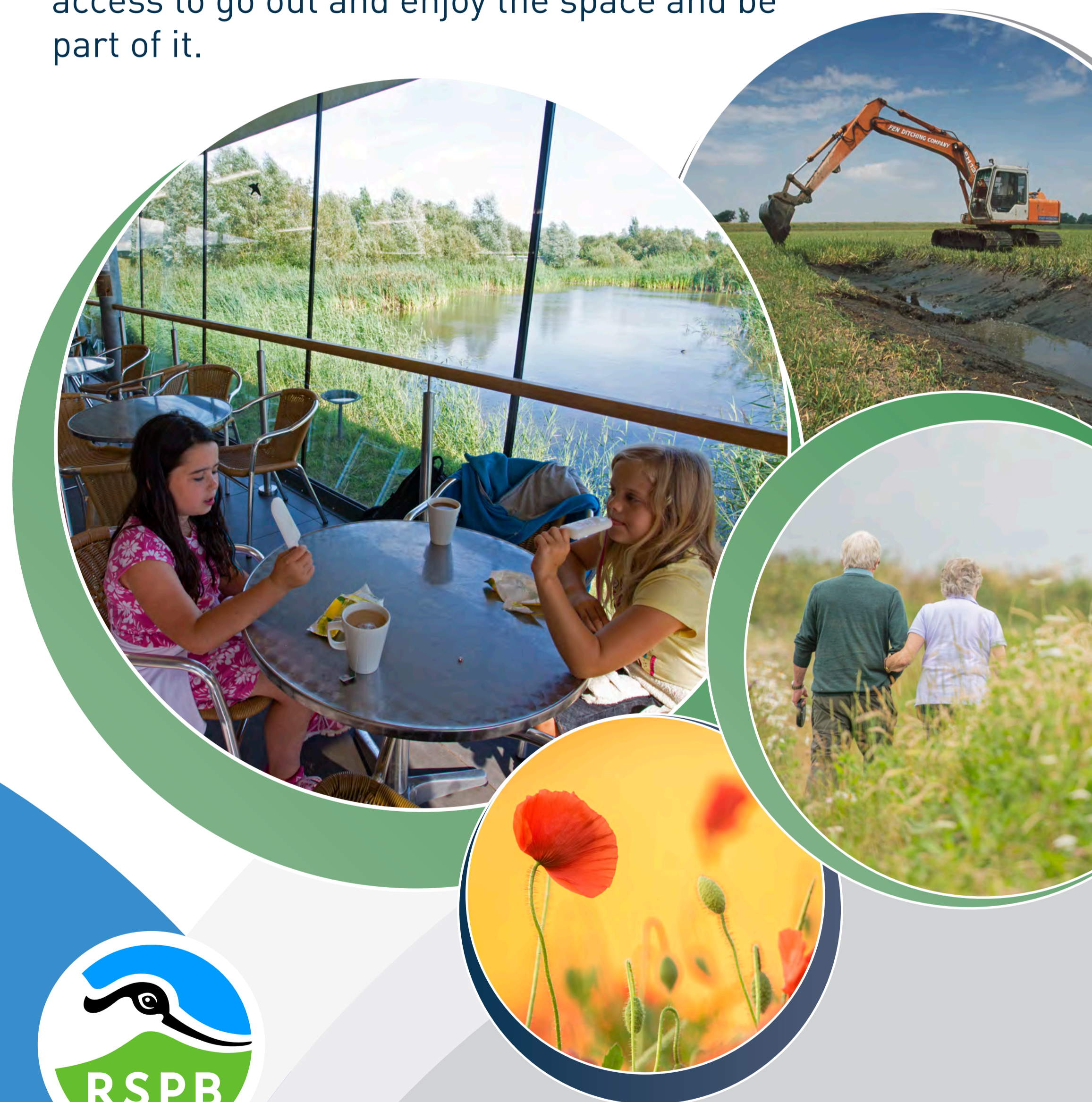
The RSPB has undertaken a range of surveys of the site to understand what is already here, and how it might be improved for people and wildlife.

The idea is that we will create many varied, new habitats to benefit all sorts of 'common' wildlife, much of which of course is no longer common.

- **Grass fields will be converted into wildflower-rich hay meadows for butterflies**
- **Poppy fields will be sown for bees and birds**
- **Lots of ponds and pools will be created for ducks, herons and kingfishers**
- **Hedgerows and areas of bushes and woodland will be planted for all sorts of birds.**

Some of it will look rather raw at opening because the habitats will still be so young, but that will be part of the journey and you get to see all the new habitats grow, evolve and mature.

But the really important thing is giving people access to go out and enjoy the space and be part of it.



The RSPB

We are Europe's largest nature conservation charity. We're passionate about wildlife and wild places – we manage over 220 nature reserves and have loads of experience managing visitor sites.

Although we have 'birds' in our name, we of course help lots of other wildlife too – making ideal habitats for birds also benefits other creatures.

And we firmly believe that a thriving natural world is essential for everyone, but is only possible if people feel connected to and understand nature.

So we love to create opportunities for people to experience nature at first hand. Kingsbrook Meadows will be a flagship site for this.

